

THE COUNTY OF TRANS NZOIA

INVESTMENT GUIDE

2013

KENYA'S CONSTITUTION (2010) RECOGNIZES DEVOLUTION AS THE ENGINE FOR TRANSFORMING OUR ECONOMY AND IN COURSE OF TIME, THE SOCIETY. THIS CAN ONLY BE ENHANCED VIA IMMENSE COLLABORATION WITH PRIVATE SECTOR DEVELOPERS/ INVESTORS. THE COUNTY GOVERNMENT IS ON THE PROCESS OF ESTABLISHING POLICIES AND REGULATIONS THAT ARE MEANT TO ENHANCE ENVIRONMENT TO INVESTORS. FOR EXAMPLE, WE ARE ON THE PROCESS OF ESTABLISHING COUNTY INVESTMENT COMMITTEE, CUSTOMIZING THE PUBLIC PRIVATE PARTNERSHIP ACT (2013), DEVELOPING COUNTY FINANCIAL ACT AMONG OTHER ECONOMIC PARAMETERS THAT PROTECT INVESTMENT. ALL THESE EFFORTS ARE GEARED TOWARDS PROVIDING A BROADER ENGAGEMENT FRAMEWORK WITH ALL STAKEHOLDERS INCLUDING THE PUBLIC AND PRIVATE SECTOR; DEVELOPMENT PARTNERS WHO WILL PLAY AND CONTRIBUTE TO SOCIO-ECONOMIC TRANSFORMATION OF THE COUNTY.

TRANSNZOIA COUNTY IS THE UNDISPUTED DESTINY TO INVESTORS. THE COSMOPOLITAN COUNTY IS STRATEGICALLY POSITIONED IN THE REGION AND OFFERS A WELCOMING INVESTMENT CLIMATE INCLUDING ABUNDANT NATURAL RESOURCES AND COMPETITIVE WORKFORCE, RAPIDLY DEVELOPING INFRASTRUCTURES, TOURISM AND OTHER INVESTMENT SUPPORTING SERVICES THAT STRENGTHEN THE INTER-SECTORAL LINKAGES FOR INVESTMENT. SECTORS THAT OFFER THE GREATEST INVESTMENT OPPORTUNITIES INCLUDE AGRICULTURE, TRADE, MANUFACTURING, TOURISM, EDUCATION, INFRASTRUCTURE (INCLUDING ENERGY), INFORMATION AND COMMUNICATION TECHNOLOGIES (ICT). THESE SECTORS OFFER A GOOD COMBINATION OF HIGH LOCAL, DOMESTIC AND GLOBAL DEMAND AND A MYRIAD OF INVESTMENT INCENTIVES, SUCH AS TAX BREAKS. THE SECTORAL MOBILIZATION COUPLED WITH ECONOMIC GROWTH AND DEVELOPMENTS IN THE COUNTY ARE THE DYNAMIC COMPONENTS THAT WILL MAKE MAKE KENYA A GLOBALLY COMPETITIVE NATION WITH A HIGH QUALITY OF LIFE FOR ALL ITS CITIZENS AS ENVISAGED IN VISION 2030.

THE COUNTY GOVERNMENT WELCOMES INVESTORS TO TRANSNZOIA AS AN IDEAL DESTINATION FOR INVESTMENT, TRADE AND TOURISM. WE ARE FULLY COMMITTED IN PROMOTING, FACILITATING AND SUPPORTING YOU.

I RECOGNIZE THE IMPORTANT ROLE OF FOREIGN DIRECT INVESTMENT AND THEREFORE URGE INVESTORS TO DELIBERATELY TAKE ADVANTAGE OF THIS PAMPHLET WHICH IDENTIFIES VIABLE INVESTMENT OPPORTUNITIES IN THE COUNTY.

H.E. PATRICK SIMIYU KHAEMBA
THE GOVERNOR, TRANS NZOIA COUNTY

THIS CHAPTER PRESENTS A SUMMARY OF BASELINE INFORMATION ABOUT THE TRANS NZOIA COUNTY. THESE FACTS ARE IMPORTANT NOT ONLY TO THE EXISTING BUT ALSO TO NEW INVESTORS WHO MAY NOT HAVE HAD A FIRSTHAND EXPERIENCE IN THE COUNTY.

1.1 TRANS NZOIA COUNTY GOVERNMENT

TRANS NZOIA COUNTY IS BORN OF THE KENYA'S CONSTITUTION (2010) WHICH LAYS GREATER EMPHASIS ON RENEWED COMMITMENT TO ECONOMIC PERFORMANCE UNDER THE DEVOLVED AND NATIONAL GOVERNANCE STRUCTURES. WE ARE CONFIDENT THAT WITH EFFICIENT MOBILIZATION OF THE MYRIADS OF RESOURCES AND WEALTH, AS WELL AS TAKING ADVANTAGE OF THE AVAILABLE INVESTMENT OPPORTUNITIES, THE COUNTY CAN UNLEASH POVERTY AND OTHER SOCIOECONOMIC CHALLENGES THAT TRANS NZOIA NEEDS TO SUCCEED.

VISION

TO BE THE LEADING AGRO BASED COUNTY WITH A HIGH QUALITY OF LIFE FOR RESIDENTS

MISSION

TO FACILITATE DEVELOPMENT, SERVICE DELIVERY AND GOOD GOVERNANCE FOR SUSTAINABLE SOCIOECONOMIC DEVELOPMENT IN TRANS NZOIA COUNTY

1.2 GEOGRAPHICAL LOCATION AND SIZE

TRANS NZOIA COUNTY IS STRATEGICALLY LOCATED BETWEEN UGANDA TO THE WEST, BUNGOMA AND KAKAMEGA COUNTIES TO THE SOUTH, WEST POKOT COUNTY TO THE EAST AND ELGEYO MARAKWET AND UASIN GISHU COUNTIES TO THE SOUTH EAST. TRANS NZOIA COUNTY COVERS AN AREA OF 2,496 SQ. KM WHICH REPRESENTS 0.42 PERCENT OF THE REPUBLIC OF KENYA. THE COUNTY HOUSES THE KEY COMMERCIAL TOWN (KITALE) WHICH PROVIDES KEY INFRASTRUCTURAL LINKAGES TO THE OIL EXPLORATION AND PRODUCTION MULTI-PROJECTS IN THE UPPER RIFT VALLEY.

1.3 TOPOGRAPHY

TRANS NZOIA COUNTY IS GENERALLY FLAT WITH GENTLE UNDULATIONS RISING STEADILY TOWARDS MT. ELGON IN THE NORTHWEST WITH AN ALTITUDE OF 4,313M ABOVE THE SEA LEVEL.

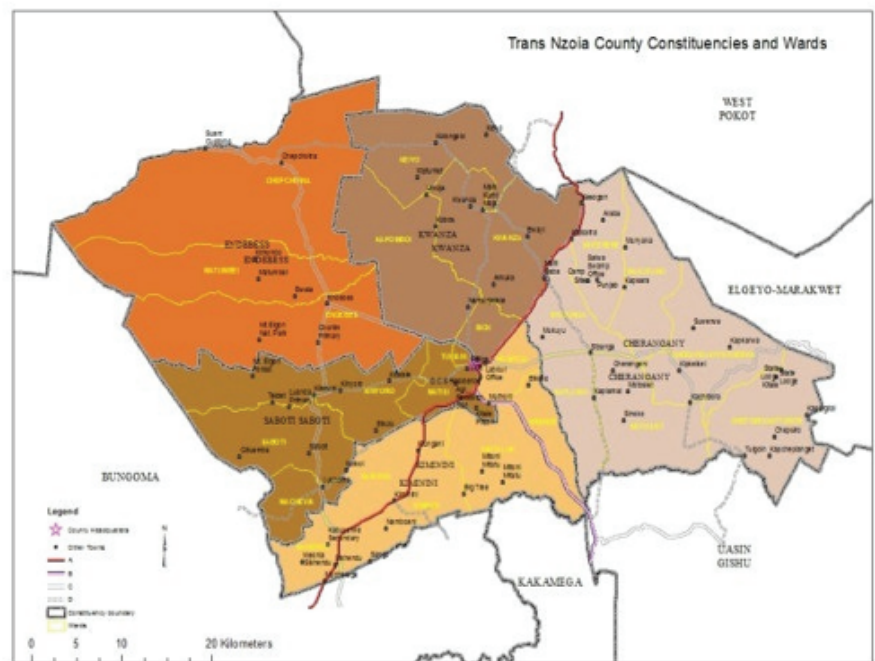
1.4 CLIMATIC CONDITIONS

THE COUNTY HAS A HIGHLAND EQUATORIAL KIND OF CLIMATE. THE RAINFALL IS FAIRLY WELL DISTRIBUTED THROUGHOUT THE YEAR. THE COUNTY EXPERIENCES BIMODAL RAINFALL PATTERN. THE LONG RAINS OCCUR FROM APRIL TO JUNE, WHILE THE SHORT RAINS FALL FROM JULY TO OCTOBER. THE MEAN TEMPERATURE IN THE COUNTY IS 18.60C; HOWEVER, TEMPERATURES VARY BETWEEN 100C TO 300C. THE COUNTY HAS FAVORABLE CLIMATE FOR BOTH LIVESTOCK AND CROP PRODUCTION. THE AVERAGE DAILY RELATIVE HUMIDITY IS 65 PERCENT AND THE WIND SPEED IS 2 KNOTS. AVERAGE ANNUAL RAINFALL IS 1569 MM

1.5 POLITICAL AND ADMINISTRATIVE UNITS

ADMINISTRATIVELY, THE COUNTY COMPRISES OF THREE ADMINISTRATIVE SUB COUNTIES NAMEDLY TRANS NZOIA WEST, TRANS NZOIA EAST AND KWANZA THAT ARE FURTHER SUBDIVIDED INTO EIGHT DIVISIONS AND THIRTY EIGHT LOCATIONS. POLITICALLY, TRANS NZOIA COUNTY HAS FIVE CONSTITUENCIES NAMEDLY ENDEBESS, CHERANGANY, SABOTI, KWANZA AND KIMININI WHICH ARE BROKEN DOWN INTO TWENTY FIVE COUNTY ELECTORAL WARDS

BELOW IS A POLITICAL MAP OF THE TRANSNZOIA COUNTY



1.6 POPULATION STRUCTURE

ACCORDING TO THE POPULATION AND HOUSING CENSUS (2009) TRANS NZOIA COUNTY HAS A POPULATION OF 818,757 PERSONS. OF THESE 407,172 WERE MALE AND 411,585 WERE FEMALE. THE INTER-CENSUAL GROWTH RATE WAS 3.7 PERCENT BETWEEN 1999 AND 2009. ASSUMING THE GROWTH RATE IS MAINTAINED, THE POPULATION FOR THE COUNTY IN 2013 IS PROJECTED TO BE 914,875 PERSONS OF WHICH 454,972 ARE MALE AND 459,903 ARE FEMALE.

THE FOLLOWING ARE THE REASONS WHY YOU SHOULD INVEST IN TRANS NZOIA COUNTY

- A) FULLY OPERATIONAL AND SEMIAUTONOMOUS COUNTY GOVERNMENT IN PLACE THAT IS EFFICIENTLY RUN AND HAS LESS BUREAUCRACY IN TERMS OF PROCEDURES WHEN APPLYING FOR INVESTMENT PERMITS.
- B) FAVORABLE WEATHER AND CLIMATE TO ATTRACT DIVERSE PEOPLE FROM DIFFERENT SOCIAL CULTURAL ENVIRONMENTS
- C) THE COUNTY ENJOYS ABUNDANT NATURAL AND ARTIFICIAL RESOURCES RANGING FROM AGRICULTURE AND LIVESTOCK, LAND, WATER SOURCES, WILDLIFE AND TOURISM, KNOWLEDGEABLE PERSONNEL AMONG OTHERS THAT SUPPORT INVESTMENTS AND INDUSTRIAL GROWTH.
- D) STRATEGIC LOCATION OF THE TRANS NZOIA COUNTY, AT THE HEART OF OTHER COUNTIES AND AS A GATEWAY TO BOTH UGANDA AND SOUTHERN SUDAN OFFERS UNIQUE BUSINESS OPPORTUNITIES IN ALL SECTORS
- E) THE COUNTY HAS ADEQUATE INFRASTRUCTURE OF ACCESS AND FEEDER ROADS. RAILWAY AND AIR TRANSPORT (AIR STRIP) IS ALSO AN OPPORTUNITY. THE ICT IS ON GROWTH THUS PROMISING REDUCTION IN POSTAGES SERVICES ETC. MOBILE AND LANDLINE COMMUNICATION ARE RELATIVELY CHEAP
- F) ATTRACTIVE TOURISM, WILDLIFE AND SAFARI DESTINATION. THE TOURISM INDUSTRY, ALREADY ONE OF THE MOST SUCCESSFUL IN THE WORLD, CONTINUES TO EXPAND IN THE COUNTY.
- G) THE COSMOPOLITAN COUNTY HAS BEEN POLITICALLY AND ECONOMICALLY STABLE OVER A TIME DUE TO COHESIVENESS. THE ABLE COUNTY LEADERSHIP WILL ENHANCE THIS THROUGH ENACTMENT OF PRUDENT AND CONSISTENT SOUND POLICIES THAT FOSTERS EFFICIENCY, EFFECTIVES AND TRANSPARENCY IN RUNNING THE COUNTY AFFAIRS
- H) THE COUNTY IS NETWORKED WITH AT LEAST TWELVE FINANCIAL INSTITUTIONS (BANKS, SACCOS, MICRO FINANCE INSTITUTIONS) INCLUDING THE LATEST MOBILE MONEY TRANSFER FACILITIES
- I) THE SECURITY IS ADEQUATE TO INVESTORS AND MAY BE UPGRADED ON INDIVIDUAL NEED BASIS
- J) AVAILABILITY OF BUSINESS SUPPORT INSTITUTIONS AND AGENCIES
- K) ACCESS TO ELECTRICAL ENERGY AND POWER SUPPLY, WATER AND OTHER KEY INPUTS IN ANY PRODUCTION AND BUSINESS PROCESS

TRANS NZOIA COUNTY IS RICH WITH DIVERSE INVESTMENT OPPORTUNITIES. THE BUSINESS PROSPECTS ARE PRIORITIZED ACCORDING TO SECTORS THAT ARE APT TO COMPETITIVE ADVANTAGES.

3.1 AGRICULTURE (AGRO-BASED INDUSTRIES)

AGRICULTURE IS THE BACKBONE OF TRANS NZOIA COUNTY ECONOMY. THIS IS DUE TO CLIMATIC CONDITION THAT IS CONDUCTIVE FOR ASSORTED FARMING PRACTICES. THERE IS PLENTY OF FARM PRODUCE THAT CAN BE ADDED VALUE. THE ANNUAL OUTPUTS FOR SOME OF THESE ARE AS SHOWN TABLE BELOW:

No.	Type of crop	Estimated annual output
1.	Maize	5 Million bags
2.	Tomatoes	2600 tones
3.	Sunflower	13,000 bags
4.	Coffee	3,200 tones
5.	Tea	2.5 Million Kgs
6.	Flowers	3 Million stems
7.	Potatoes	113,200 bags
8.	Bananas	3,600 tones
9.	Passion fruits	100 tones

GIVEN THE OUTPUT FIGURES ABOVE VARIOUS AGRO-BASED INDUSTRIES CAN BE ESTABLISHED TO ADD VALUE TO THE CROPS:

- › MAIZE MILLING PLANTS
- › TOMATOES PROCESSING PLANTS
- › OIL EXTRACTING PLANTS
- › COFFEE PROCESSING PLANTS
- › TEA PROCESSING PLANTS

HERBAL PRODUCTS CAN ALSO BE COMMERCIALY HARNESSSED FORM THE NUMEROUS INDIGENOUS TREE SPECIES AVAILABLE IN THE NATURAL FORESTS AVAILABLE IN THE MT. ELGON SLOPES. ALSO, DUE TO THE CLIMATIC CONDITIONS COUNTY HAS A POTENTIAL FOR FARMING CROPS SUCH AS BANANA, CARNATIONS, PASSION FRUITS, FLOWERS, ROSELLE.

3.2 LIVESTOCK

TRANS NZOIA COUNTY IS HOME TO A VARIETY OF LIVESTOCK AMONG THEM: POULTRY, CATTLE, GOATS, SHEEP, PIGS, RABBITS, FISH, BEE KEEPING, DONKEYS, GEESE, CAMELS. OTHER UPCOMING LIVESTOCK DOMESTICATIONS ARE OSTRICH, QUAIL, TURKEYS AND GUINEA PIG. THE PROPORTIONATE POPULATION OF THESE DOMESTICATED ANIMALS VARY AND ARE ESTIMATED AS IN THE BELOW TABLE.

No.	Type of Livestock	Estimated output	Annual	Estimated value
1	Cattle	174,500		400,000,000
2	Sheep	160,100		105,000000
3	Goats	85,000		245,000,000
4	Poultry	18720		6,600,000
5	Milk	88,000,000 lits		2,340,000,000
6	Fish	22,815.85 kgs		7,000,000
7.	Pigs	4,180		50,000,000
8.	Rabbits	6,690		13,000,000
9.	Camels	39		5,000,000
10.	Donkeys	6,580		200,000,000
11.	Ostriches	5		2,000,000

THIS THEN PRESENTS NUMEROUS OPPORTUNITIES FOR SETTING UP VALUE ADDING PLANTS. BELOW ARE SOME OF THESE OPPORTUNITIES:

- › MILK PROCESSING PLANTS
- › MEAT PROCESSING PLANTS
- › TANNERY FOR PROCESSING HIDES AND SKINS
- › HONEY PROCESSING
- › LIVESTOCK FEEDS PROCESSING
- › BONES AND HOOVES PROCESSING PLANTS
- › COLD STORAGE FACILITIES, ESPECIALLY FOR FISH
- › ESTABLISHMENT OF POULTRY HATCHERIES AND POULTRY BREEDERS STOCKS

GAME MEAT; THIS IS A NEW AREA, WHICH HAS A VERY WIDE INVESTMENT SCOPE IN SUCH AREAS AS

- › OSTRICH FARMING
- › CROCODILE FARMING

THERE IS NEED TO SUSTAINABLY DIVERSIFY OUR LIVESTOCK AND CROP PRODUCTION TO THE MOST EFFECTIVE AND EFFICIENT MEANS OF IMPROVING INCOMES AND FOOD SECURITY AS WELL. CASH CROPS THAT ARE NOT IN COMPETITION WITH FOOD CROPS FOR HUMAN CONSUMPTION SHOULD BE ENCOURAGED FOR MANUFACTURING AND COMMERCIALIZATION.

3.3 TRADE

THE COSMOPOLITAN COUNTY IS NATURALLY CONDUCTIVE FOR INVESTMENT DUE TO THE COHESIVENESS AND ENABLING CLIMATE THAT ATTRACTS FOREIGN DIRECT INVESTORS. THE EXISTING BUSINESS COMMUNITY IS ALWAYS WELCOME TO COMPETITION THAT OF COURSE PROMOTES CREATIVITY AND INNOVATION IN THEIR INVESTMENT HABITS.

POSSIBLE AREAS FOR INVESTMENT IN TRADE INCLUDE ESTABLISHMENT OF:

- WHOLESALE MARKETS
- MODERN RETAIL MARKETS
- MALLS
- WORLD CLASS CONSULTANCY FIRMS
- SUB-CONTRACTING ARRANGEMENTS.
- ALSO, THERE IS NEED FOR THE DEVELOPMENT OF STREET LIGHTING THROUGH DIGITAL ADVERTISEMENT

3.4 EDUCATION

THERE IS AVERAGE HIGH ENROLMENT (85%), TRANSITION (78.6%) AND COMPLETION (81.55%) RATES IN PRIMARY SCHOOLS. SIMILAR TRENDS ARE RECORDED IN SECONDARY SCHOOLS. HOWEVER, THE LEVEL OF ABSORPTION OF THE DROP OUTS AND THE FORM FOUR LEAVERS TO INTERMEDIATE AND TERTIARY SCHOOLS IS DWINDLING DUE TO INADEQUATE TRAINING FACILITIES. THIS THEREFORE CALLS FOR INTENSIVE INVESTMENT IN THE EDUCATION SECTOR TO ACCOMMODATE THE INCREASED ACADEMIC NEEDS.

OPPORTUNITIES IN THE EDUCATION SECTOR ARE BUT NOT LIMITED TO:

- PRIVATE PRIMARY SCHOOLS
- MIDDLE LEVEL COLLEGES FOR TRAINING HOUSE HELPS, CONSTRUCTION AND REHABILITATION OF FACILITIES TO THE STREET CHILDREN,
- PRIVATE SECONDARY SCHOOLS
- THERE IS NEED TO CONSTRUCT AND EQUIP MODERN SCIENCE LABORATORIES FOR SECONDARY SCHOOLS.
- A PRIVATE UNIVERSITY WITH CAPACITY TO CONDUCT RESEARCH AND DEVELOPMENT WHILE OFFERING ALL ACADEMIC DISCIPLINES E.G. COMPUTER ENGINEERING, MEDICINE, ARCHITECTURE, LAW, ELECTRICAL AND ELECTRONICS, AERONAUTICS ETC
- THE INTRODUCTION OF LAPTOPS AS TEACHING AND LEARNING TOOL IN PRIMARY SCHOOLS ALSO NECESSITATES FOR INVESTMENT IN INFORMATION AND COMMUNICATION TECHNOLOGY EDUCATION TO EQUIP THE PUBLIC, STUDENTS AND TEACHERS WITH MODERN ICT SKILLS.

- A MODERN AND FULLY EQUIPPED DRIVING SCHOOL CATERING FOR ALL CADRES OF MOTORISTS, INCLUDING MOTORCYCLE RIDERS.
- A CATERING SCHOOL IS ALSO AN OPPORTUNITY TO SUPPLY THE HOTEL INDUSTRY WITH FULLY TRAINED PERSONNEL. THE SCHOOL CAN ALSO SERVE AS A TRAINING CENTER FOR ETIQUETTES AND PUBLIC MANNERISM. ESTABLISHMENT OF INDUSTRIAL BUSINESS INCUBATORS IS ALSO ESSENTIAL FOR STRENGTHENING THE ENTREPRENEURSHIP EDUCATION COMPONENT WITH EMPHASIS ON ENTREPRENEURSHIP INCUBATION OF INNOVATIONS. THIS WILL GO HAND IN HAND WITH ESTABLISHMENT OF A BUSINESS MENTORING AND COACHING TRAINING FACILITY.

3.5 INFORMATION COMMUNICATION TECHNOLOGY (ICT)

TRANS NZOIA COUNTY IS A RELATIVELY YOUNG BUT SLOWLY GROWING ICT INDUSTRY.

THE POTENTIAL PROSPECTS IN THIS SECTOR MAY BE THE ESTABLISHMENT OF:

- COMPANIES OFFERING TRAINING SERVICES, DATABASE DEVELOPMENT, HARDWARE AND SOFTWARE DEVELOPMENT CENTER, NETWORKING, WEBSITE DEVELOPMENT
- CALL CENTERS
- BUSINESS PROCESS OUTSOURCING CENTERS
- COMPUTER SHOPS FOR ACCESSORIES AND PRODUCTS
- DIGITAL COMMUNICATION TECHNOLOGIES
- CLOSED CIRCUIT TELEVISION (CCTV) CAMERA SERVICES
- DATA CENTER AND DISASTER RECOVERY CENTERS
- T.V STATIONS
- DIGITAL ADVERTISEMENTS / BILL BOARDING
- DIGITAL BROADCAST NETWORK ETC

3.6 MANUFACTURING SECTOR

WHEREAS THE MANUFACTURING SECTOR IS THE KEY DRIVER TO THE GROWTH OF OTHER SECTORS, THE SECTOR HAS BEEN IGNORED FOR QUITE SOME TIME. THE COUNTY ENJOYS PLENTY OF RESOURCES THAT CAN BE ADDED VALUE VIA MANUFACTURING TO ENHANCE PROFITABILITY AND CREATE EMPLOYMENT THROUGH FORWARD AND BACKWARD LINKAGES WITH OTHER SECTORS.

THE FOLLOWING ARE THE POSSIBLE OPPORTUNITIES AVAILABLE:

- AGRO PROCESSING OF FARM PRODUCE,
- FERTILIZER MANUFACTURING PLANT
- AGRO-PROCESSING MACHINERY SPARE PARTS,

- › ASSEMBLY AND SPARES AUTOMOBILE (MOTOR BIKES, VEHICLES AND EVEN BICYCLES),
- › WASTE RECYCLING AND PROCESSING, PLASTICS RECYCLING
- › ART CRAFT AND TEXTILES,
- › ELECTRONIC AND ELECTRICAL COMPONENTS TO COMPLIMENT THE INTRODUCTION OF LAPTOPS TO PRIMARY SCHOOLS,
- › SCRAP METAL RECYCLING,
- › WATER BOTTLING,
- › GLUE PROCESSING FROM WASTE WOOD HIDES AND HOOVES,
- › MANUFACTURE OF PHARMACEUTICALS FROM HERBALS ETC.

3.7 TOURISM AND ENTERTAINMENT

THE SOCIAL ECONOMIC BENEFITS OF TOURISM IN TRANS NZOIA COUNTY ARE DERIVED FROM THE TOURIST RESOURCES, SCENIC BEAUTY, WILDLIFE AND UNIQUE ECOLOGICAL AND CULTURAL RESOURCES.

OPPORTUNITIES FOR INVESTMENT IN THIS SECTOR ARE BUT NOT LIMITED TO:

- › CONSTRUCTION AND DEVELOPMENT OF RESORT CENTERS,
- › HOTELS AND ACCOMMODATION FACILITIES
- › CONFERENCE HALLS,
- › CASINOS,
- › LODGES AND THEATRES
- › GOLF RESORT,
- › AMUSEMENT PARKS,
- › FITNESS AND SPORT TRAINING CENTER,
- › MODERN CULTURAL CENTER,
- › ESTABLISHMENT OF TOUR AND GUIDE FIRMS ETC.

NIGHT RUNNING AND TRADITIONAL CIRCUMCISION CAN BE ORGANIZED AND PACKED AS A CULTURAL ACTIVITY FOR UPCOUNTRY ENTERTAINMENT AND TOURIST ATTRACTION. FILM INDUSTRY MAY BE NECESSITATED BY THE SERVICE DEMAND COUPLED WITH THE NATURAL SERENITY FOR SHOOTING IN THE COUNTY AS WELL AS COUNTY MUSIC CENTER.

3.8 HOUSING

THE INVESTMENT PROSPECTS IN HOUSING SECTOR ARE:

- › BUILDING OF RESIDENTIAL ESTATE,
- › HOUSING OR MORTGAGE FINANCE SERVICES (ISSUE OF CORPORATE BONDS, PARTNERSHIPS),
- › SECURITISATION OF RENTAL AND TENANT PURCHASE HOUSES,

- CONSTRUCTION OF HOUSES AND ALTERNATIVE ENVIRONMENT FRIENDLY HOUSING MATERIALS E.G. SOIL STABILIZED BRICKS.
- THE CURRENT GROWTH IN POPULATION AND BUSINESS ACTIVITIES IS OPENING KITALE TOWN TO INVESTMENT OPPORTUNITIES INCLUDING REAL ESTATE.
- HOUSES FOR SALE IS ANOTHER AREA OF INVESTMENT

3.9 ENERGY SECTOR

THE OPPORTUNITIES IN ENERGY SECTOR ARE:

- HARNESSING OF RENEWABLE SOURCES OF ENERGY E.G. BIO-ENERGY (BIOGAS, BIOFUEL ETC) FROM BIOMASS, ANIMAL WASTE AND OIL RICH PLANTS.
- SOLAR AND WIND ELECTRIC GENERATORS CAN ALSO BE TAPPED.
- ENERGY SAVING JIKOS CAN ALSO BE ANOTHER AREA OF INVESTMENT TO CURB DEFORESTATION WHILE IN SEARCH FOR FIREWOOD

3.10 HEALTH SECTOR

THE CURRENT COUNTY'S HEALTH CARE SYSTEM CONSISTS OF BOTH THE PUBLIC AND PRIVATE SECTORS, WITH THE PRIVATE ONE INCREASINGLY COMPLEMENTING PUBLIC SERVICES. WHILE THE SIZE AND RESPONSIBILITIES OF THE PRIVATE SECTOR VARIES, IT IS USUALLY DIVERSE, REPRESENTING A BROAD RANGE OPPORTUNITIES FOR-PROFIT BUSINESSES AND NOT-FOR PROFIT ORGANIZATIONS. THE NEED FOR MEDICAL SERVICES WILL INCREASE WITH INCREASE IN POPULATION AND CONSECUTIVE CHANGES IN ENVIRONMENT DUE TO HUMAN ACTIVITIES. THE CURRENT DOCTOR TO POLLUTION RATION IS 1: 28,705 WHILE NURSE TO POPULATION RATIO IS 1: 2,178 INDICATING HIGH MARGIN LEVEL OF THE MEDICAL NEEDS TO THE SERVICES AVAILABLE IN THE COUNTY.

THE MAJOR INVESTMENT OPPORTUNITIES IN HEALTH SECTOR ARE:

- MOBILE CLINICS
- MOBILE BLOOD TRANSFUSION CENTERS
- MODERN REFERRAL HOSPITAL
- DIAGNOSTIC CENTERS FOR MAMMOGRAPHY OR COMPUTERIZED TOMOGRAPHY (CT) SCANNING
- EMERGENCY MEDICAL TRANSPORTATION SERVICES
- RESEARCH AND DEVELOPMENT OF HERBAL MEDICINE
- MEDICAL EDUCATION AND TRAINING INSTITUTES (FOR MEDICAL DOCTOR, NURSING AND PARAMEDICAL SCHOOLS, AND eLEARNING PLATFORMS),
- MANUFACTURING OF PHARMACEUTICALS, MEDICAL SUPPLIES, MEDICAL EQUIPMENT, AND BIOSCIENCES.

- › THE NUMBER OF MENTAL RETARDATION CASES IS ON INCREASE WHICH AGAIN CLAMORS FOR ESTABLISHMENT OF A MENTAL HOMES AND HEALTHCARE

3.11 MINING

MINING IS A RELATIVELY NEW BUT THRIVING EXPLORATIVE ECONOMIC ACTIVITY IN KENYA. IN TRANS NZOIA COUNTY, TRACES OF GRAPHITE HAVE BEEN REPORTED AT CHERANGANY HILLS. OTHER MINERALS REPORTED ARE ASBESTOS AND VERMICULITE. THESE AND MORE ELEMENTS REQUIRE FURTHER STUDY BEFORE EXPLORATIONS.

3.11 INFRASTRUCTURE

THE INFRASTRUCTURAL OPPORTUNITIES WORTH INVESTMENT IN THE COUNTY ARE BUT NOT LIMITED TO DEVELOPMENT AND EXPANSION OF KITALE AIRSTRIP INCLUDING INFRASTRUCTURE AND AVIATION SERVICES, REVITALIZATION OF KITALE-ELDORET RAILWAY, MAINTENANCE AND DEVELOPMENT OF INTERIOR ROAD NETWORKS IN THE COUNTY.